

WESTERN AUSTRALIA *the* ROAD TRIP *State*



**WESTERN
AUSTRALIA**
EXPERIENCE EXTRAORDINARY

WELCOME to the ROAD TRIP state

Hitting the road in Western Australia means the murmur and melody of a good conversation, your favourite playlist, and progressive discoveries through some of Australia's most iconic landscapes. WA's picturesque and rugged beauty was made to be explored by car, taking a few days, to a few weeks or more. These driving routes will take you to some of the world's most pristine and clean coastlines, into the heart of premium wine country, and through spectacular gorges and outback. Just bring a sense of adventure.

NATURE, FOOD, WINE AND EPIC SCENERY	4
The Avon Valley 500 Loop	6
The Great Southern Drive	8
The South West Nature and Wine Drive	10
The Great South West Edge	12
Local Travel Tips: Rottnest Island	14
SIMPLE PLEASURES AND EASY ADVENTURES	16
The Great Ocean Drive	18
The Golden Quest Discovery Trail	20
The Indian Ocean Drive	22
The Wool Wagon Pathway	24
The World Heritage Coastal Drive	26
Local Travel Tips: Ningaloo Reef	28
NATURE'S BEST LANDSCAPES AND WILDERNESS	30
The West Kimberley Crossing	32
The Ardi Cultural Drive	34
The Gibb River Road	36
The Great Kimberley Inland Track	38
The Warlu Way	40
The Great Kimberley Wilderness Loop	42
Local Travel Tips: 48 hrs in Broome	44
Explore Perth	46
Snaps from the Road	48
Find Your Way	50
Nature's Calendar	51



COVER: BORANUP KARRI FOREST, MARGARET RIVER REGION
ABOVE: CAPE RANGE NATIONAL PARK, NINGALOO REEF

NATURE, food, WINE and epic SCENERY

With world-class surf and wine country in the south, and the historic settlements and countryside surrounding Perth; these drives were made to be explored at your own pace, and with your favourite company. Margaret River's climate is the closest in Australia to Bordeaux's, and wine making excellence stretches throughout the south west. These drives will lead you along tall-timber forest roads, with hatted restaurants overlooking endless vineyards, and to coastal national parks abundant with marine life.



Accommodation with food and an epic view

Accommodation options:

CAMPING | GLAMPING | HOTEL | HOME | APARTMENT

From National Park camping to glamping in geodesic domes on a luxury 144-acre estate, to indulging in a spa retreat overlooking a winery estate; there's something to suit every style, mood and budget along these drives.

To find accommodation ideas as individual as you, head to:
westernaustralia.com/accommodation



BOSTON BREWING CO., NEAR DENMARK

The AVON VALLEY 500 Loop

York and New Norcia

Find beauty, romance and a slice of old Spain on a relaxing weekend trip to York, Toodyay and New Norcia. Soak up the serenity of Australia's only monastic town, the heritage of WA's first inland settlement and the Avon Valley's natural beauty, all within less than two hours' drive from Perth.

START Perth | **END** Perth

DURATION 2 days

HIGHLIGHTS

- John Forrest National Park
- Historic town of York
- Avon Valley
- New Norcia
- Seasonal wildflowers

BEST TIME All year round (wildflowers September to November)

VEHICLE 2WD

LEG 1 | Perth to York 97km

- Explore the granite outcrops and waterfalls in John Forrest National Park, WA's oldest conservation area.
- Discover the grand heritage town of York where much of the Victorian and Federation architecture has been lovingly restored to house galleries, museums, cafes, restaurants and antique shops.
- For more action and adventure, take in views of the Avon Valley landscape from 14,000 feet on a tandem skydive.

LEG 2 | York to Northam, Toodyay, New Norcia 280km

- Enjoy a majestic hot air balloon flight from Northam over the Avon Valley as dawn breaks.
- Explore the heritage architecture, local arts and crafts, fresh produce, wines and beautiful country gardens of Toodyay.
- Discover Australia's only monastic town, New Norcia. The monks have been living a simple communal life here since 1847. They welcome visitors to join them at prayer times, or take a guided tour of the Spanish architecture and museum, and indulge in the monastery's freshly baked goods.

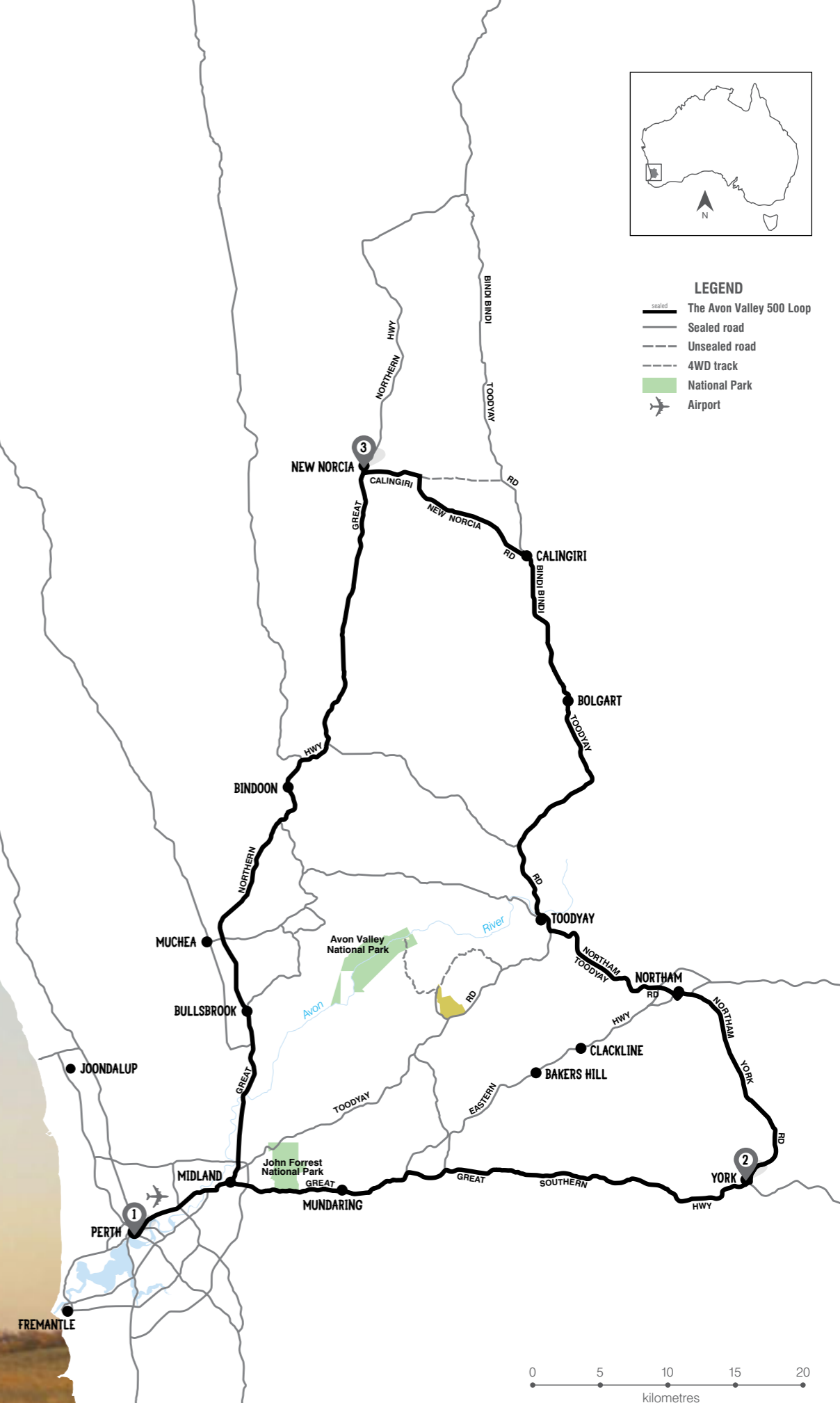
LEG 3 | New Norcia to Perth 145km

- Travel back to Perth stopping at Bindoon to sample local produce and country baking or detour to Chittering Valley to explore the local wineries and produce.



LEGEND

- The Avon Valley 500 Loop
- Sealed road
- Unsealed road
- 4WD track
- National Park
- Airport



The GREAT SOUTHERN DRIVE

Albany, Denmark and Mount Barker

Extraordinary biodiversity and a mild Mediterranean climate make the Great Southern Wine Region of Mount Barker, Albany and Denmark a veritable feast of wines, produce, wildflowers and forests. It's the coolest of WA's viticulture regions, renowned for its Riesling, Chardonnay, Cabernet Sauvignon, Pinot Noir, Shiraz and Malbec.

START Perth
END Perth

DURATION
3 to 4 days

HIGHLIGHTS

- Great Southern Wine Region
- Porongurup National Park
- Albany
- Denmark

BEST TIME
September to March

VEHICLE
2WD

LEG 1 | Perth to Mount Barker 367km

- Follow the Albany Highway south from Perth, through the historic agricultural towns of Williams, Arthur River and Kojonup.
- Make your first cellar door stop at Mount Barker – the hub of the Great Southern Wine Region.
- Enjoy a lazy lunch overlooking the vineyards and stunning country panoramas in the Porongurups.

LEG 2 | Mount Barker to Albany (via Porongurup) 75km

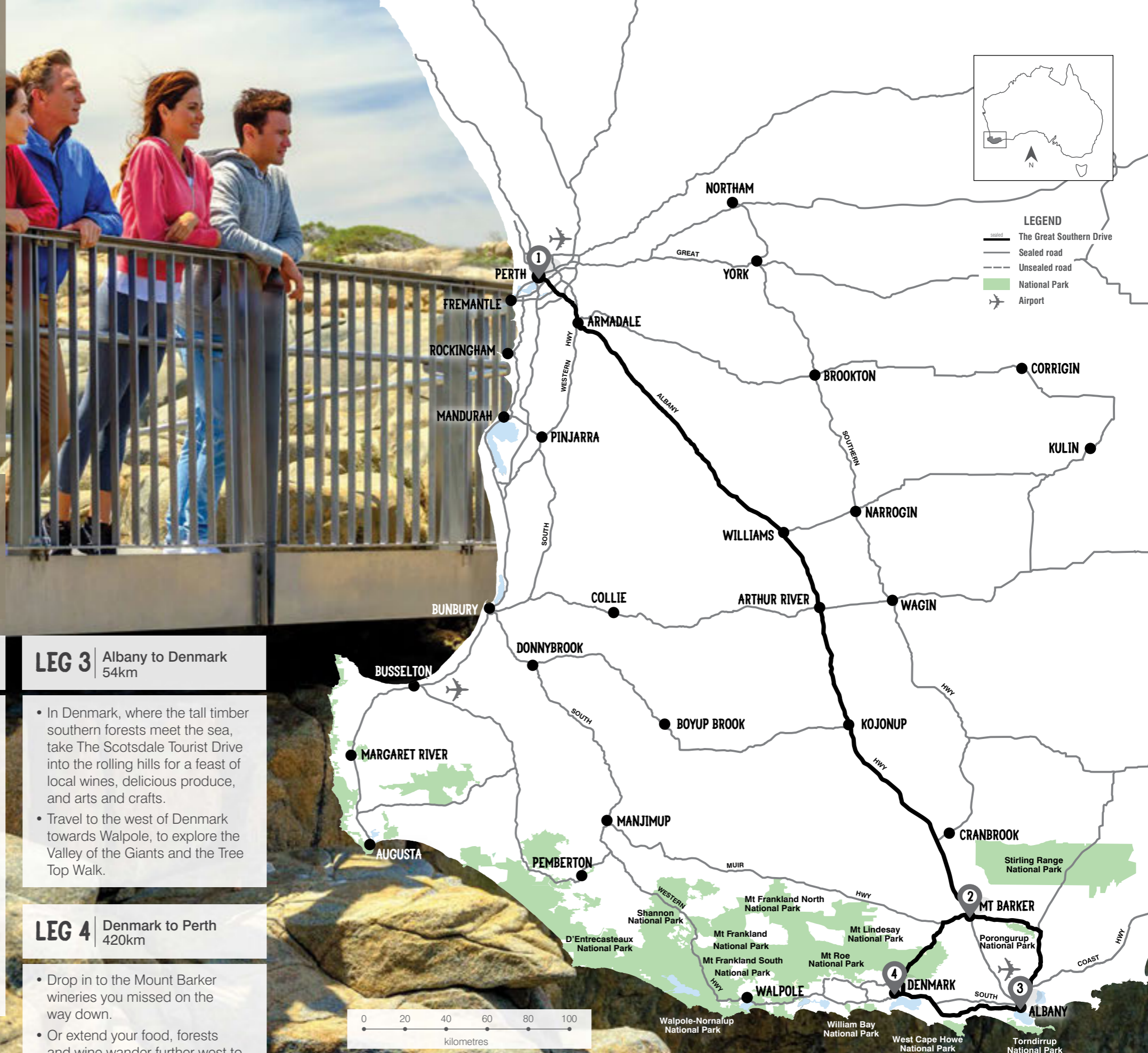
- Choose from many trails, including the breathtaking Granite Skywalk, in Porongurup National Park – a haven to more than 100 species of birds and 750 varieties of plants and wildflowers.
- Explore the historic city of Albany, with its charming heritage buildings, restaurants and taverns, and nearby wineries.
- Visit the National Anzac Centre at the historic Princess Royal Fortress, where the first and second convoys of Australian and New Zealand troops departed for the First World War.

LEG 3 | Albany to Denmark 54km

- In Denmark, where the tall timber southern forests meet the sea, take The Scotsdale Tourist Drive into the rolling hills for a feast of local wines, delicious produce, and arts and crafts.
- Travel to the west of Denmark towards Walpole, to explore the Valley of the Giants and the Tree Top Walk.

LEG 4 | Denmark to Perth 420km

- Drop in to the Mount Barker wineries you missed on the way down.
- Or extend your food, forests and wine wander further west to Pemberton, Manjimup and the Margaret River region.



The SOUTH WEST NATURE and WINE Drive

Bunbury, Margaret River and Pemberton

Seekers of nature, premium wines and top-rated chefs head to Margaret River to indulge their passions. Venture a little off the trail and you'll find the mild weather and abundant sunshine also produce some extraordinary flavours amongst the southern forests of Pemberton and Manjimup.

START Perth

END Perth

DURATION 4 to 6 days

HIGHLIGHTS

- Geopraphe Wine Region
- Margaret River Wine Region
- Pemberton Wine Region
- Manjimup Wine Region
- Manjimup truffles

BEST TIME All year round

VEHICLE 2WD

LEG 1 | Perth to Bunbury (via Harvey) 186km

- Get your first taste of South West cheese, wine and fresh produce in Harvey.
- Visit the vibrant port city of Bunbury – home to more than 100 wild bottlenose dolphins. Learn more about the dolphins at the Dolphin Discovery Centre.
- Take a self-guided tour of Bunbury's family-run wineries around the Ferguson Valley.

LEG 2 | Bunbury to Margaret River 107km

- Take your pick from over 50 wineries, as well as over 100 fine restaurants, boutique breweries, art galleries and fresh produce stores in Margaret River.
- The region is one of the world's 34 biodiversity hot-spots with 80% of plant species found nowhere else on earth.
- Margaret River is home to world-class food and wine, pristine beaches, surfing, tall tree forests, caves and in season whale watching and wildflowers. Explore a section of the coastal Cape to Cape track, picnic under the towering Boranup Forest, or head underground to discover a labyrinth of limestone caves.

LEG 3 | Margaret River to Pemberton 139km

- Head deep into tall karri tree country to reach the old timber milling town of Pemberton.
- Taste some of WA's top wines at Pemberton's cellar doors – the perfect accompaniment to a feast of fresh local flavours, including Pemberton's finest delicacy, marron.

LEG 4 | Pemberton to Perth (via Manjimup) 327km

- Get a taste of the earthy sensation that's coveted by top chefs the world over – Manjimup black truffles – as well as a few more cool climate wines.



The GREAT South WEST Edge

William Bay National Park, Porongurup National Park, Fitzgerald River National Park and Cape Le Grand National Park

Spend 11 days taking one unique road trip along the edge of the South West. This drive takes you through wine regions, karri forests, and along the dramatic south coast to Esperance, before an optional return route to Perth via the iconic Wave Rock.

START Perth | **END** Perth

BEST TIME
All year round

DURATION
11 days

VEHICLE
2WD

HIGHLIGHTS

- Margaret River
- Pemberton
- Albany
- Cape Le Grand National Park
- Wave Rock



LEG 1 | Perth to Bunbury 172km

- Stop and see the thousands of colourful gnomes at Gnomesville in the Ferguson Valley.
- Take a dolphin swim tour or hop on a dolphin eco cruise to meet the friendly wild dolphins at the Bunbury Dolphin Discovery Centre.

LEG 2 | Bunbury to Margaret River 99km

- Walk along or dive under the jetty, or step down in the underwater observatory surrounded by an ocean full of vibrant coral and fish.
- Visit vineyards, caves, tall timber forests and follow country lanes to secluded beaches and world-class surf around Margaret River.

LEG 3 | Margaret River to Albany 387km

- Drive through ancient forests and the produce-rich towns of Nannup and Pemberton, and on to spectacular coastal scenery surrounding Walpole and Denmark en route to Albany.
- Call in at Greens Pool and Elephant Rocks in William Bay National Park just outside Denmark.

LEG 4 | Albany to Hopetoun 382km

- Head into the Porongurup National Park and climb the Granite Sky Walk – a 670m high suspended walkway overlooking Porongurup Range.
- For a worthwhile excursion take the Chester Pass Road to the Stirling Ranges, home to Bluff Knoll - Western Australia's highest peak.

LEG 5 | Hopetoun to Esperance 193km

- Head just out of Hopetoun to Fitzgerald River National Park. Hit the park's walking and driving trails to explore almost 20 per cent of Western Australia's plant species.
- When you arrive in Esperance, take in the Great Ocean Drive, and 40 kilometres of coastal bliss along a ribbon of pristine beaches surrounding the town.
- Visit Cape Le Grand National Park and its white sands, lunar-like granite peaks and crystalline waters. Look out for the friendly kangaroos at Lucky Bay.

LEG 6 | Esperance to Wave Rock 382km

- Before leaving Esperance set aside a full day to explore the Recherche Archipelago to view Australian and New Zealand fur seals, sea eagles and other wildlife. Or fly over Lake Hillier, a pink lake on Middle Island off the coast of Cape Arid.
- Travel from Esperance to Hyden.

LEG 7 | Hyden to Perth 391km

- Hyden is famous for Wave Rock, a fascinating 3 billion year old rock formation in the shape of a wave. The area also boasts historic Aboriginal hand print art in Mulka's Cave.
- Travel back to Perth via a ribbon of historic country towns through Western Australia's wheatbelt.
- Alternatively, extend your return to Perth via Kalgoorlie, Australia's biggest outback town, and centuries-old gold rush history.



Local TRAVEL tips: ROTTNEST Island

by Ella Liascos

GETTING THERE:

Perth's island getaway is just 19km off the coast. The most popular and economical way to reach the island is by fast ferry, with several transfers daily, but there are other ways to get there, including helicopter and plane transfers.

EXPLORING ROTTNEST'S SECRET SWIMMING SPOTS:

You can't go wrong choosing any of the 20 beautiful bays on the Island, but there's also an additional 63 secluded beaches.

FOR SNORKELLING:

In the warm Leeuwin current that runs past Rottnest, you'll find green turtles and 135 species of tropical fish.

If you prefer to stay near the main settlement, The Basin is 10 minutes away and is a perfect beginner snorkelling location.

The limestone reefs around Rottnest may look beautiful, but they've also been responsible for a few shipwrecks over the years. Among the best preserved is The Uribes, a popular snorkelling spot at the east end of Thomson Bay.

FOR SWIMMING OR STAND UP PADDLE BOARDING:

Hire a bicycle and paddleboard, pack snacks from the general store and head west to the Champagne Pool at Marjory Bay.

WHERE TO SPOT QUOKKAS, HUMPBACK WHALES AND DOLPHINS:

Whales and Dolphin Watching

One of the most peaceful things about Rottnest is that there are no cars (just the odd shuttle bus, so the island is a bicycle haven).

Just an 18-minute cycle from the main settlement is Little Salmon Bay, a prime spot for watching migrating humpback whales between September and December, and bottlenose dolphins all year round.

Spot Quokkas along Wadjemup Bidi

The quokka's furry smile has made them a viral sensation, which — since the rise of social media — has become one of Rottnest's most sought after souvenirs. Let's keep these little marsupials smiling by exercising care when snapping your pic!

LOCAL WATERING HOLES:

No trip to Rottnest is complete without a jam donut or a meat pie from the bakery.

BEST SPOT TO WATCH SUNSET:

For dinner with a view, pick up takeaway fish and chips and cycle to Bathurst Lighthouse for sunset. For double the impact, the lake at Geordie Bay mirrors the sky's purple and orange hues.

A sparkling golden ale and uninterrupted sunset views at Hotel Rottnest is the perfect way to end a trip to the island.



"You can explore ROTTNEST ISLAND in a day, but my tip is to take a few days or more..." Ella Liascos



Simple PLEASURES and EASY Adventures

Nothing calms the city mind like the escape of a straight country road, and there's little else that rejuvenates like getting back to nature in its purest and simplest state. These road trips are designed to get you on the open road, and into the vast stretches of gorges, quiet untouched beaches, and nature's rhythms along the way. Camp the national parks or check into accommodation along the way, whichever you prefer, make sure you're up late for a stargaze and up early for at least one sunrise.



Accommodation to inspire the simple life

Accommodation options:

CAMPING | GLAMPING | HOTEL | HOME | APARTMENT
| STATION STAY

To experience WA's beauty, camping for at least one evening can be a rewarding reconnection with nature. But if that's not for you, there's unique and luxury accommodation that inspires the simple life too. From station stays en route to the white and turquoise shores of Ningaloo, to glamping and eco cabins in Exmouth.

To find accommodation ideas as individual as you head to:
westernaustralia.com/accommodation



The GREAT OCEAN Drive

Esperance and West Beach, Blue Haven Beach, Twilight Beach, Ten Mile Lagoon, Eleven Mile Beach

Heralded as having some of the finest beaches in Australia and renowned for its beach-dwelling kangaroos, nature-packed islands and crystalline waters; Esperance packs a coastal punch that's hard to beat. This 40km coastal drive starting just a few kilometres from the centre of town takes just an hour or two to complete, yet fits in some of the finest beaches and coastal scenery in Australia.

- START** Esperance | **END** Esperance
- BEST TIME** All year round
- DURATION** 1-2 hours
- VEHICLE** 2WD

HIGHLIGHTS

- Rotary Lookout
- Twilight Beach
- Observatory Point
- Ten Mile Lagoon

LEG 1 | Esperance to Fourth Beach 7km

- Grab a coffee at one of the town's cafés and settle in to the first section, stopping in at West Beach, Blue Haven Beach, Salmon Beach, and Fourth Beach.
- For expansive views of Esperance Bay and Twilight Beach, call in at Observatory Point.

LEG 2 | Fourth Beach to Eleven Mile Beach 12km

- Esperance is fringed by a limestone reef, creating a ribbon of protected swimming holes at many of the beaches along the Great Ocean Drive. For the pick of the best, head to Ten Mile lagoon for pristine snorkelling and swimming.
- If you don your flippers and mask, keep an eye out for the Leafy Sea Dragon among the kelp and seaweed fringes of large rocks.

LEG 3 | Eleven Mile Beach to Esperance 21km

- Once you reach Eleven Mile Beach, the Great Ocean Drive hooks inland through the town's pastoral hinterland. When you reach Barook Road, take the turn and drive into a rare craft beer find – Lucky Bay Brewing Co.
- The final stage of the Great Ocean Drive returns into Esperance via Pink Lake; contrary to its name the lake has returned to a whiter colour in recent years, but still offers bushwalks and a thriving habitat for local birdlife.
- End your drive back in Esperance, with a walk through the town's acclaimed museum village, with its galleries, craft shops and restored heritage buildings.



The GOLDEN QUEST DISCOVERY Trail

Kalgoorlie, Menzies and Laverton

The Golden Quest Discovery Trail unearths the riches of the Goldfield's 120-year gold rush history – from the mind-blowing buzz of one of the largest open-cut gold mines on Earth, to eerie ghost towns and the striking Antony Gormley statues on Lake Ballard.

START
Perth (or Kalgoorlie)

END
Perth

DURATION
6 days

HIGHLIGHTS

- Gold rush history and heritage
- Super Pit
- Antony Gormley statues
- Gold rush ghost towns
- Seasonal wildflowers

BEST TIME
March to November

VEHICLE
2WD (4WD optional)

LEG 1 | Perth to Kalgoorlie 592km

- Join the Golden Pipeline Heritage Trail – following the path of the original pipeline that brought water to the Goldfields at the turn of the century.
- Stop to view the spring wildflowers.
- Begin the Golden Quest Discovery Trail in Coolgardie, the birthplace of the 1892 gold rush, with a rich pioneering heritage proudly presented in its architecture and museums.

LEG 2 | Kalgoorlie

- Pull on a hardhat for a guided tour of the Super Pit – this 6km hole in the ground is one of the largest open cut mines on Earth.
- Discover and admire the grandeur of Kalgoorlie's gold rush history and architecture. Get a taste of life today in the lively pubs, clubs, cafes and restaurants of Australia's largest outback town.
- Play a hole on the world's longest golf course, the Nullarbor Links.

LEG 3 | Kalgoorlie to Menzies and Lake Ballard 180km

- Pass the ghost town of Broad Arrow, Ora Banda, Siberia and Goongarri to reach the historic gold mining town of Menzies.
- View one of the largest and most remarkable outdoor galleries on Earth at Lake Ballard, where 51 Antony Gormley sculptures stand against the stark white salt bed.

LEG 4 | Menzies to Kookynie, Leonora and Gwalia 162km

- Explore the ruins of Kookynie's industrious past.
- Explore the historic gold rush precinct of Gwalia, including the museum and historic Hoover House – once home to the former American President, Herbert Hoover.

LEG 5 | Leonora to Laverton and Kalgoorlie 483km

- Pass the old nickel mines of Murrin Murrin and Windarra and the sites of Hawks Nest, Mount Morgans and Old Rail Bridges.

LEG 6 | Kalgoorlie to Perth 592km

- Follow the golden pipeline from Kalgoorlie back to its source in the Perth Hills.

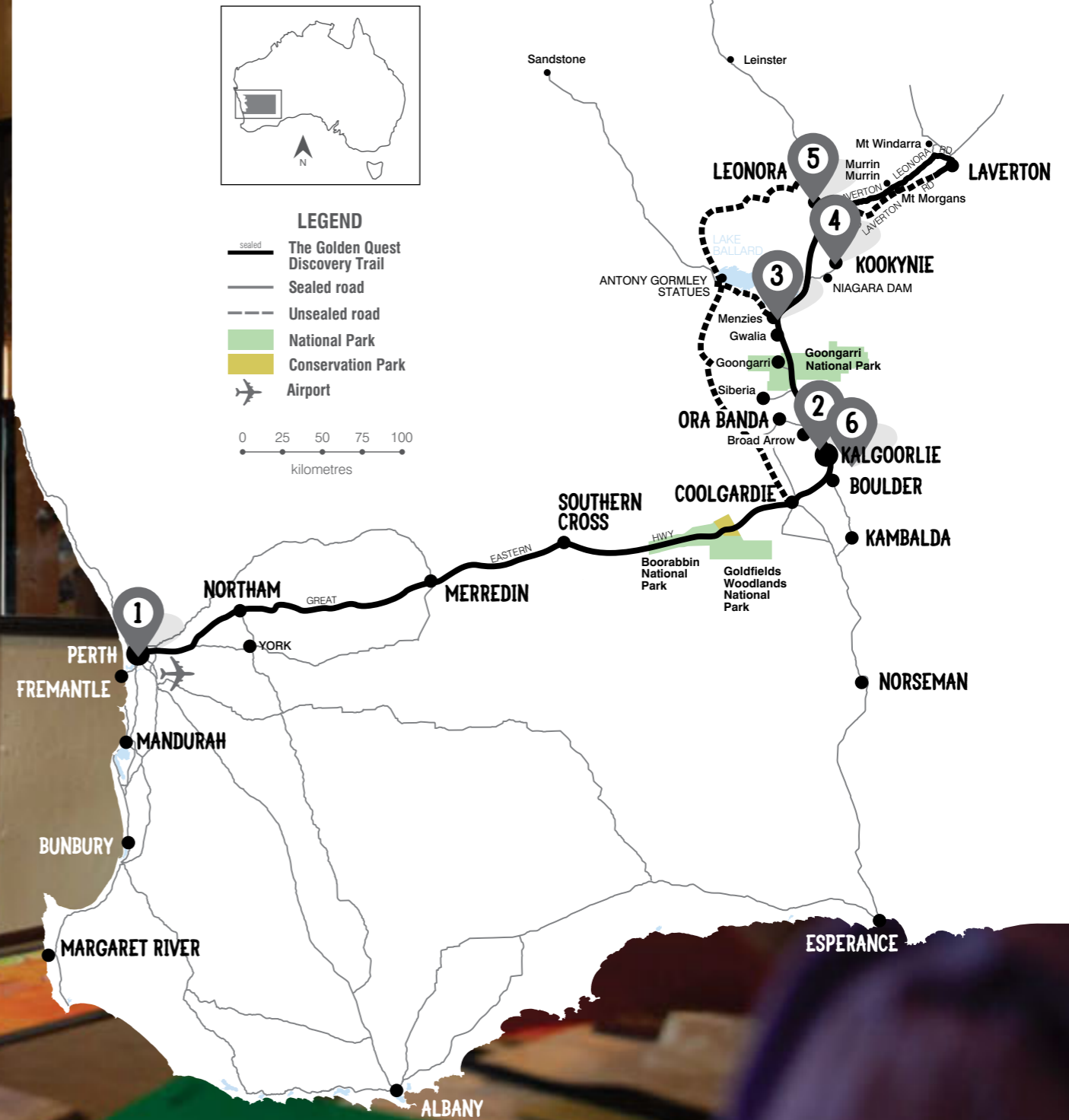
4WD 362km
If you have a 4WD, an optional return loop from Leonora to Coolgardie can be taken along the unsealed route signposted.



LEGEND

- Sealed road
- Unsealed road
- National Park
- Conservation Park
- Airport

0 25 50 75 100 kilometres



The INDIAN OCEAN DRIVE

Indian Ocean Drive and Kalbarri

Take a colour-filled road trip where yellow moonscapes, ancient red gorges and wildflower blooms meet Indian Ocean blues. From Perth you'll pass the lunar landscape of the Pinnacles, and a ribbon of coastal towns between Jurien Bay and Geraldton. Next you'll hit the bubblegum pink hues of Hutt Lagoon and an outback coastal playground in and around Kalbarri National Park.

START
Perth

END
Perth

DURATION
5 to 7 days

HIGHLIGHTS

- Pinnacles Desert
- Lesueur National Park
- Jurien Bay Marine Park
- Kalbarri National Park
- Hutt Lagoon Pink Lake

BEST TIME
All year round

VEHICLE
2WD

LEG 1 Perth to Cervantes
200km

- The Pinnacles Desert in Nambung National Park is one of the most curious natural landscapes on Earth. Follow the drive or walk trail through thousands of limestone spires formed over millions of years.
- Marvel at the stromatolites and thrombolites – some of the oldest living fossils on Earth – at Lake Thetis.

LEG 2 Cervantes to Jurien Bay and Dongara
158km

- View the dazzling springtime blooms of more than 900 wildflower species in Lesueur National Park.
- Jump aboard a Jurien Bay sea lion charter to meet some of Australia's rarest and most playful marine life.
- Skydive out of a plane and onto the beach.

LEG 3 Dongara to Geraldton
66km

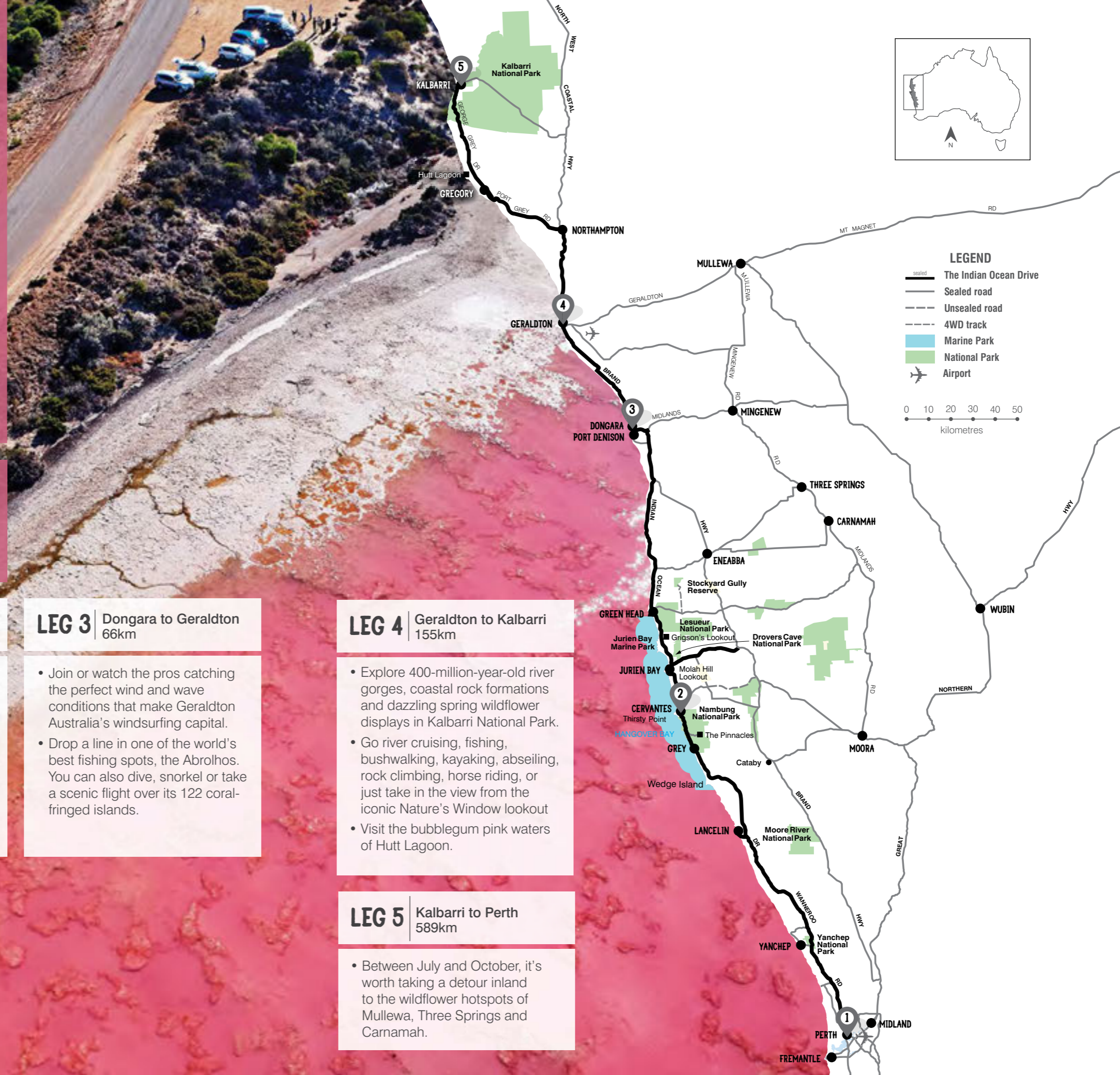
- Join or watch the pros catching the perfect wind and wave conditions that make Geraldton Australia's windsurfing capital.
- Drop a line in one of the world's best fishing spots, the Abrolhos. You can also dive, snorkel or take a scenic flight over its 122 coral-fringed islands.

LEG 4 Geraldton to Kalbarri
155km

- Explore 400-million-year-old river gorges, coastal rock formations and dazzling spring wildflower displays in Kalbarri National Park.
- Go river cruising, fishing, bushwalking, kayaking, abseiling, rock climbing, horse riding, or just take in the view from the iconic Nature's Window lookout
- Visit the bubblegum pink waters of Hutt Lagoon.

LEG 5 Kalbarri to Perth
589km

- Between July and October, it's worth taking a detour inland to the wildflower hotspots of Mullewa, Three Springs and Carnamah.



LEGEND

- Sealed road
- Unsealed road
- 4WD track
- Marine Park
- National Park
- Airport

0 10 20 30 40 50
kilometres

The WOOL WAGON Pathway

Mullewa, Gascoyne Junction and Exmouth

Here's an Australian outback trail that packs a big adventure into just a few days. Following in the footsteps of early pioneers, you'll journey through spectacular wildflower country, outback desert and vast working stations to reach the bluest ocean and the largest fringing reef on Earth.

START
Geraldton (or Perth)

END
Perth (or Geraldton)

BEST TIME
April to September
(wildflowers from July)

DURATION
6 to 10 days

VEHICLE
4WD (2WD optional detour)

HIGHLIGHTS

- Seasonal wildflowers
- Station stays
- Mount Augustus (optional detour)
- Pioneering history
- Ningaloo Reef
- Whale sharks

If starting from Perth, take the Indian Ocean Drive route from Perth to Geraldton (approximately 400km) and take in the spectacular Pinnacles Desert and Jurien Bay en route.

LEG 1 | Geraldton to Pindar and Murchison Settlement 400km

- In spring Mullewa dazzles you with some of the most striking displays of wildflowers on Earth.
- Stop to take in the wide-open desert landscapes and 23 interpretive sites to discover stories of the Wool Wagon Pathway.
- Grab a copy of the Wool Wagon Pathway Guide Book from the local visitor centre to discover fascinating historic stories of 23 interpretive sites on the drive trail.

LEG 2 | Murchison to Gascoyne Junction 282km

- Explore the spectacular cliffs, rugged canyons and outback wildlife of Kennedy Range National Park.
- Extend your adventure to take in Mount Augustus and view the outback from the top of the world's largest monolith – it's twice the size of Uluru.
- If you do not have access to a 4WD, the North West Coastal Highway provides a 2WD option between Geraldton and Carnarvon.

LEG 3 | Gascoyne Junction to Carnarvon and Exmouth 173-310km

- Explore the region's history and heritage with a visit to Gascoyne Aboriginal Heritage and Cultural Centre and Carnarvon Heritage Precinct.
- Take a detour by 4WD to Quobba, Red Bluff, 3 Mile Camp and Gnaraloo to experience the southern end of World Heritage listed Ningaloo Reef.

LEG 4 | Coral Bay to Exmouth 365-505km

- From mid March to July each year, Exmouth is one of the best places in the world to take a swim with the largest fish in the ocean – the gentle whale shark.
- Discover Ningaloo Reef, easily accessible from shore.

LEG 5 | Exmouth to Perth 1,268km

- Retrace your tracks back to Perth.



ECHIDNA AT CAPE RANGE NATIONAL PARK.

The WORLD HERITAGE COASTAL DRIVE

Shark Bay and Ningaloo Reef

The Shark Bay-Ningaloo coast is one of few places on Earth where you can visit two World Heritage listed treasures in one self-drive adventure. This trail reveals the natural wonders that put the region on the UNESCO world map – from the biggest fringing reef, to the largest and oldest living fossils on the planet.

START Perth | **END** Perth

BEST TIME March to November

DURATION 9 to 11 days

VEHICLE 2WD

HIGHLIGHTS

- Ningaloo Marine Park
- Cape Range National Park
- Shark Bay World Heritage Area
- Hamelin Pool stromatolites
- Shell Beach
- Monkey Mia dolphins
- Coral Bay
- Kalbarri National Park
- Hutt Lagoon

TURQUOISE BAY, NINGALOO REEF

LEG 1 Perth to Kalbarri 588km

- The Indian Ocean Drive leads you to one of the most unique landscapes on Earth, the Pinnacles Desert of Nambung National Park.

LEG 2 Kalbarri

- Cruise, kayak, walk, climb or abseil Kalbarri's 400-million-year-old river gorges. Or take in the region's extraordinary beauty, spring wildflowers and rock formations, including iconic Nature's Window, from the park's lookouts.

LEG 3 Kalbarri to Denham/ Monkey Mia 375-399km

- Get a glimpse of life over 3,500 million years ago at the Hamelin Pool Stromatolites – the largest and oldest living fossils on the planet.
- Take a stroll on Shell Beach – one of the few places in the world where you'll see a beach made entirely of billions of tiny shells.

LEG 4 Monkey Mia

- Monkey Mia is one of the world's top spots for dolphin encounters. Wild dolphins have visited virtually every day since the early 1960s.

LEG 5 Shark Bay to Carnarvon and South Ningaloo 375-399km

- Continue along the North West Coastal Highway to Carnarvon. If you have a 4WD a worthwhile detour is to the southern reaches of Ningaloo Reef at Red Bluff.

LEG 6 Shark Bay/South Ningaloo to Coral Bay 581km (from Shark Bay) 330km (from South Ningaloo)

- In the calm, sheltered waters of Coral Bay, you're just a short snorkel from Ningaloo's coral gardens – home to 500 species of fish and 300 varieties of coral.

LEG 7 Coral Bay to Exmouth 152km

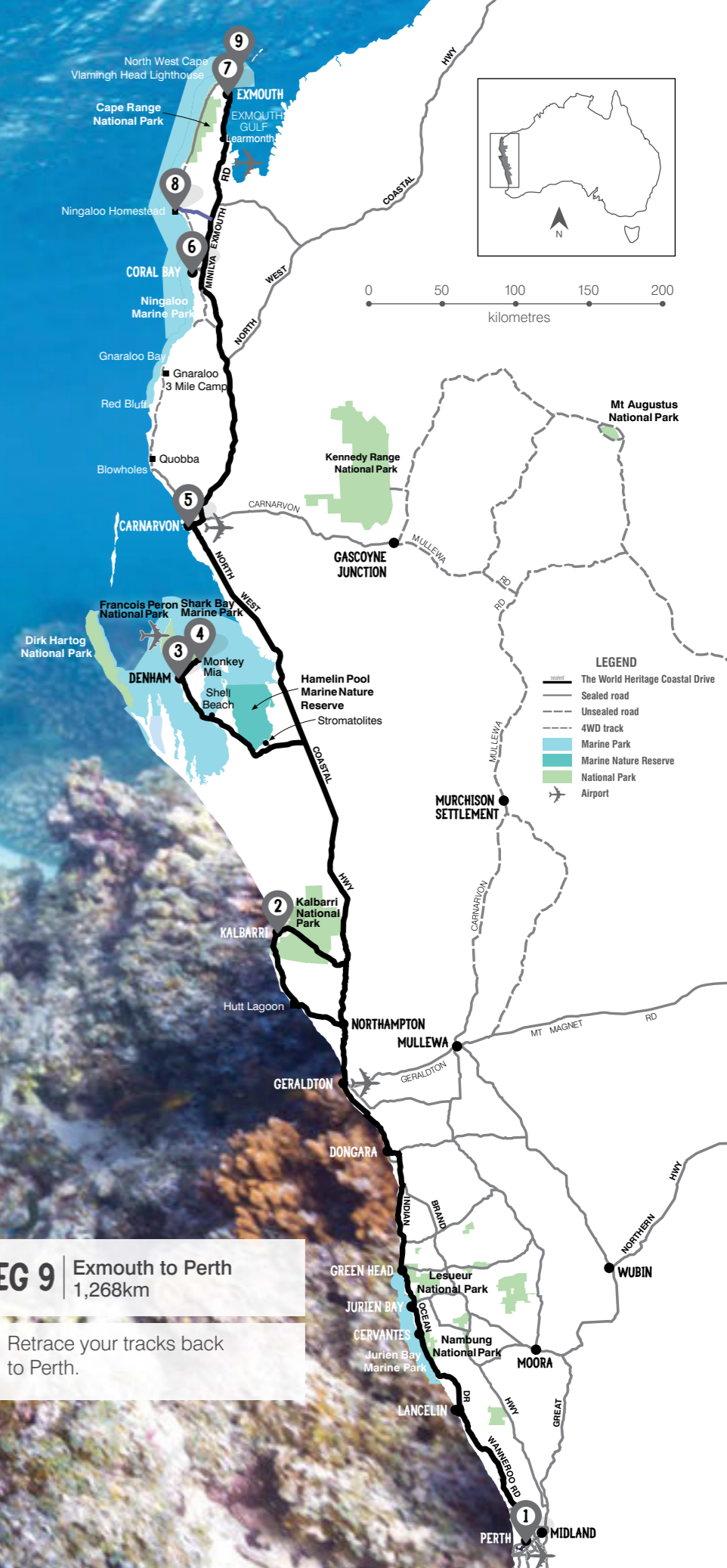
- Exmouth and Coral Bay are two of the best places in the world to swim with whale sharks (March to July), and humpback whales (July to October).

LEG 8 Exmouth to Ningaloo Marine Park and Cape Range National Park 160km

- Take a wildlife cruise (seasonal) or self-guided bushwalk up the rugged red canyon of Yardie Creek.

LEG 9 Exmouth to Perth 1,268km

- Retrace your tracks back to Perth.



Local TRAVEL tips: NINGALOO Reef



My favourites for a week

around NINGALOO REEF



by Sarah Ellis

Combine beaches, reef and gorges in a week around Ningaloo Reef.

Two years ago, Sarah and her partner started their own ecotourism business, *Ningaloo Discovery*, taking people out to swim with whale sharks and other marine life on the World Heritage listed Ningaloo Reef.

When friends visit, we head straight to Vlamingh Head Lighthouse at the northern end of Ningaloo Reef. It's a great vantage point. You can see all

the way down the reef. It surprises a lot of people to learn that Ningaloo is the world's largest fringing coral reef, so you can get to it straight from the beach. There's so much you can do in a week!

CAPE RANGE NATIONAL PARK

Next we usually head down into the Cape Range National Park, to the iconic snorkelling spots like Oyster Stacks and Turquoise Bay. You can put your mask and snorkel on and go

in straight off the beach, then just drift over the coral.

If you want to relax, just pick your own stretch of sand, set up a beach umbrella, and take your favourite book. The aqua colour of the water is enough to set your mind at ease, and the only interruption might be a couple of turtles poking their heads up to check you out.

MORE THAN WHALE SHARKS

People come to Ningaloo Reef to swim with the whale sharks. But in just one

day, we might also see a huge variety of whales – humpbacks, minkes, blue whales, orcas. As well as dolphins, manta rays, turtles, dugongs, reef sharks and thousands of tiny blue neon fish. It's like a real-life David Attenborough documentary, but you're in it.

We can now get you in the water with humpback whales too, and I'd certainly recommend that for an adventurous visitor.

LOCAL FAVOURITES

Another highlight is Yardie Creek, a freshwater system which flows between the cliffs of Yardie Creek Gorge, just over the peninsula from Exmouth. I like to take a stand-up paddle board and paddle up the gorge. The red cliffs are a great contrast to the colours of Ningaloo.

Nature's BEST LANDSCAPES and WILDERNESS

For adventurers that seek to be awe inspired, these road trips will lead you to Western Australia's most photographable areas. From the pearling history and giant tides of Broome and the west Kimberley, to the gorges, waterfalls and giant boab trees of the east Kimberley and Kununurra. These landscapes are best accessed by car, with some optional inclusions for 4WD vehicles on routes through the Kimberley. You can choose to fly in and hire a car from the nearest service town, or take to the road and be rewarded every minute spent driving to them.



Accommodation with style and difference

Accommodation options:

CAMPING | GLAMPING | HOTEL | HOME | APARTMENT
| STATION STAY

A road trip into WA's wide open landscapes is well catered for with accommodation options as varied as the surroundings. Camping, bush retreats and station stays will bring the views to your doorstep with an unpolluted view of the stars and scenery.

To find accommodation ideas as individual as you head to:
westernaustralia.com/accommodation



The WEST KIMBERLEY

Crossing

Broome, Derby and Fitzroy Crossing

In the west Kimberley, a 350-million-year-old reef system has created a trio of spectacular natural treasures – Windjana Gorge, Tunnel Creek and Geikie Gorge. Venture into one of the last true wilderness areas on Earth to experience all three, and get a taste of the Kimberley’s pioneering spirit on the legendary Gibb River Road.

START
Broome

END
Broome

DURATION
4 to 5 days

HIGHLIGHTS

- The Gibb River Road
- Windjana Gorge National Park
- Tunnel Creek National Park
- Geikie Gorge National Park

BEST TIME
May to September

VEHICLE
2WD (4WD recommended for Fairfield-Leopold Downs Road)

LEG 1 | Broome to Derby 222km

- Discover Derby’s history, heritage and culture with a visit to the Boab Prison Tree, Wharfinger’s House Museum, Mowanjum Art and Cultural Centre, the Royal Flying Doctor Base and School of the Air.
- Hop on a half-day scenic flight over the world’s only Horizontal Waterfalls and the 1,000 islands and islets of the Buccaneer Archipelago.

LEG 2 | Derby to Fitzroy Crossing 295km

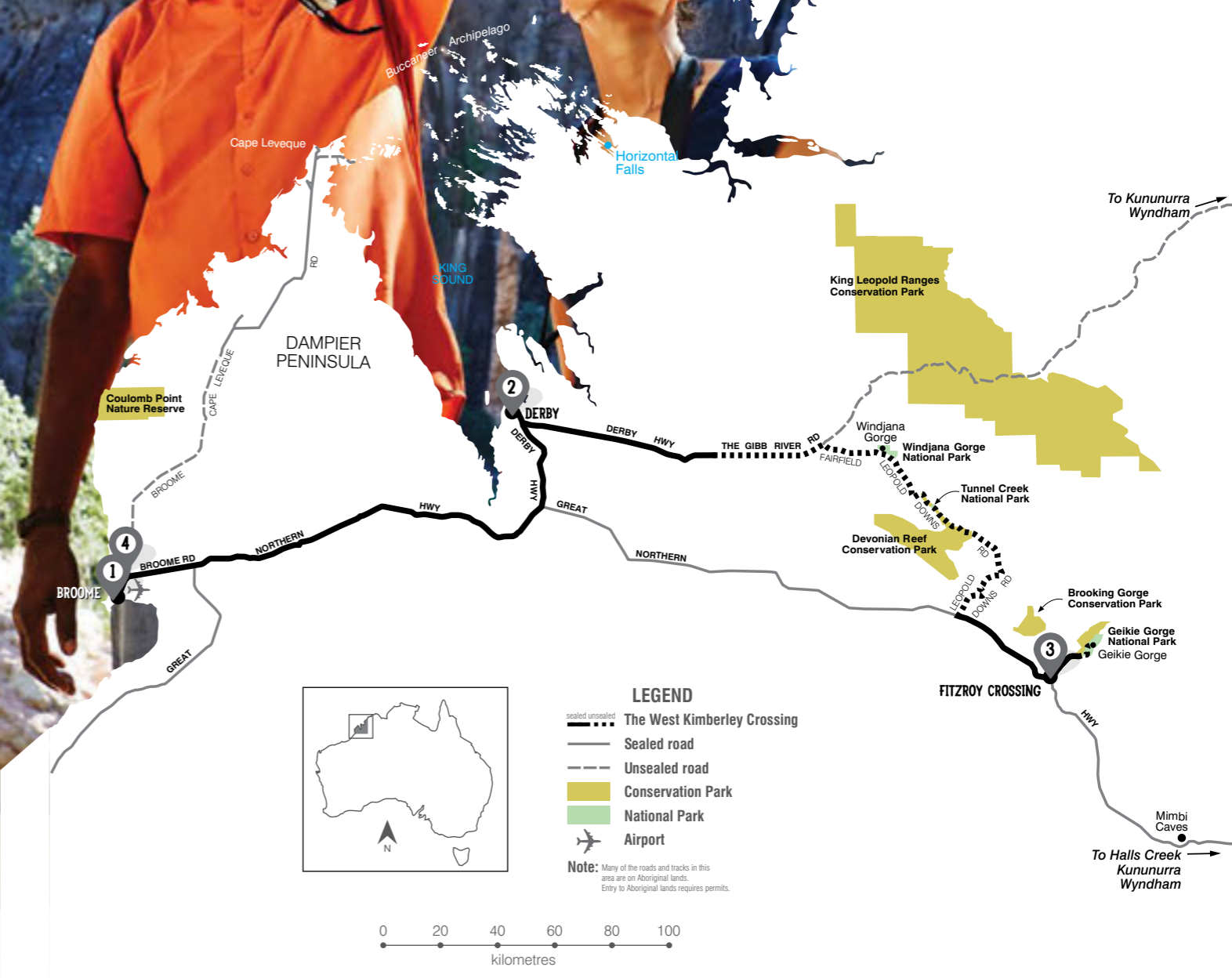
- Windjana Gorge National Park is one of the Kimberley’s most stunning gorges. Follow the 3.5km walk trail to explore this ancient reef system formed around 350 million years ago. Look out for ancient fossils in the sheer 100-metre-high walls.
- Tunnel Creek National Park is WA’s oldest cave system. Take a torch-lit walk through the 750-metre tunnel and its subterranean world of bats and fresh water crocodiles.

LEG 3 | Fitzroy Crossing to Geikie Gorge 40km (return)

- Join the local Bunuba people for a river cruise and cultural tour of the dramatic 30-metre deep Geikie Gorge. Spot native wildlife, freshwater crocs and fossilised ancient lifeforms.

LEG 4 | Fitzroy Crossing to Broome 396km (+180km return to Mimbi Caves)

- Venture into the enchanting labyrinths and cultural sites of Mimbi Caves with an Indigenous guide.
- Explore the exotic pearling town of Broome. Take in the beauty of a Cable Beach sunset from a camel train and witness the natural phenomenon of the Staircase to the Moon.



WINDJANA GORGE NATIONAL PARK,
OFF THE GIBB RIVER ROAD

The ARDI CULTURAL Drive

Broome and Dampier Peninsula

When you let one of the oldest surviving cultures show you their country on the Dampier Peninsula and Cape Leveque, you'll realise there's more to the Kimberley's coastal wilderness than striking contrasts of white sand, turquoise sea and pindan cliffs. Ardi, which means a direction 'Northeast' in the ancient Bardi language, is a journey of discovery with spear fishing, mud crabbing, bush and reef walking awaiting to be discovered.

START
Broome

END
Broome

DURATION
5 days

HIGHLIGHTS

- Mercedes Cove
- Sacred Heart Church
- Cape Leveque
- Cygnet Bay Pearl Farm
- Lombadina

BEST TIME
May to October

VEHICLE
4WD

LEG 1 | Broome to Mercedes Cove 153km

- Visit Beagle Bay Aboriginal Community and the awe-inspiring pearl shell altar of the Sacred Heart Church.
- Take a tour with an Indigenous guide for an introduction to the local culture and their 40,000-year connection to this land and sea.

LEG 2 | Mercedes Cove to Cape Leveque 70km

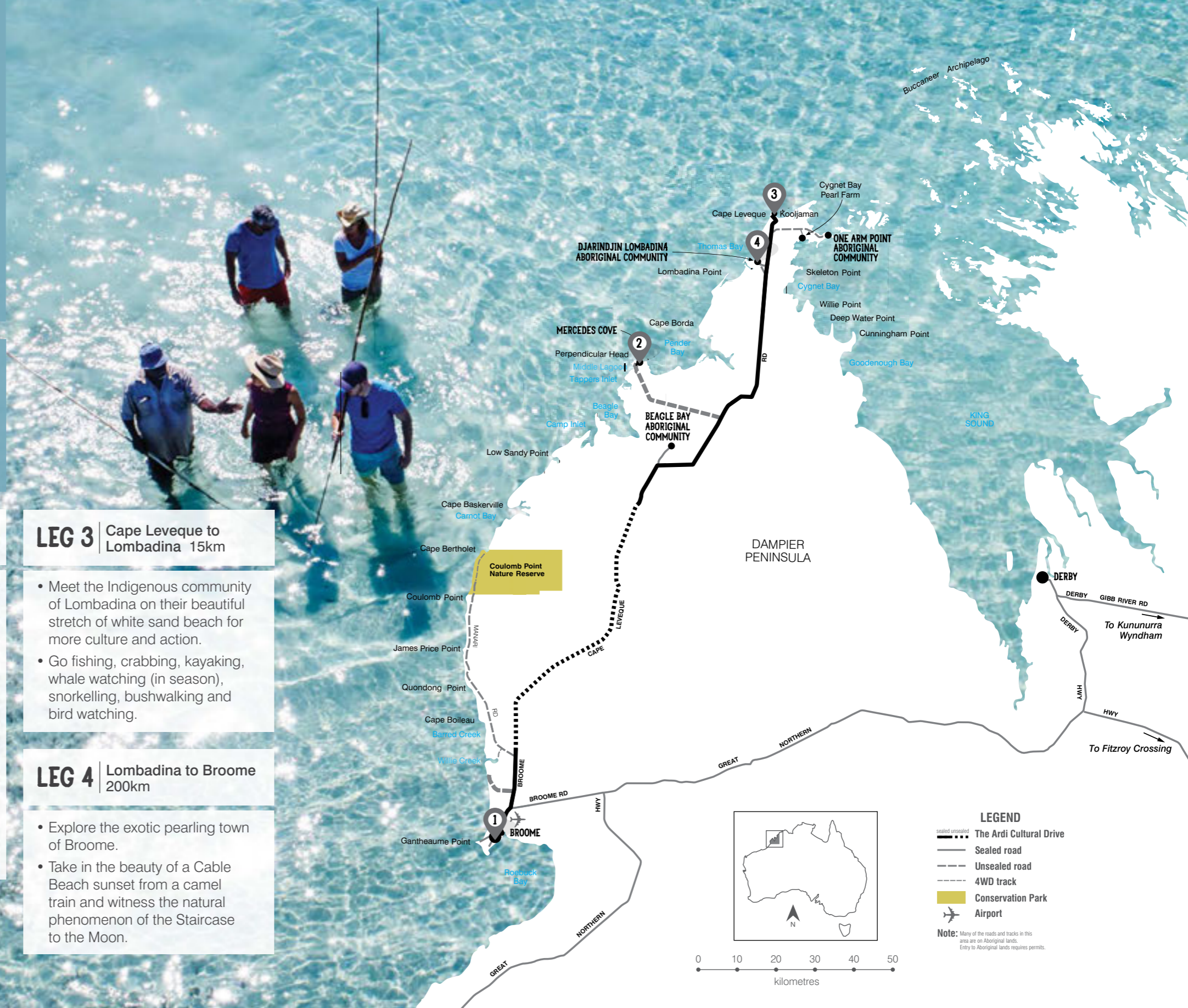
- Join the local Bardi people at Kooljaman, try your hand at spear making and fishing. Hunt for mud crabs in the mangroves and cook your catch. Take a glass-bottom tour, or walk the reef at low tide.
- Discover the art of pearl farming at Cygnet Bay, Australia's oldest pearl farm open to the public.
- Take a scenic cruise or flight to the 1,000 islands and islets of the Buccaneer Archipelago and the world's only Horizontal Waterfalls from Kooljaman at Cape Leveque.

LEG 3 | Cape Leveque to Lombadina 15km

- Meet the Indigenous community of Lombadina on their beautiful stretch of white sand beach for more culture and action.
- Go fishing, crabbing, kayaking, whale watching (in season), snorkelling, bushwalking and bird watching.

LEG 4 | Lombadina to Broome 200km

- Explore the exotic pearling town of Broome.
- Take in the beauty of a Cable Beach sunset from a camel train and witness the natural phenomenon of the Staircase to the Moon.



The GIBB RIVER Road

Wyndham and Derby

The Gibb River Road is one of Australia's most unique 4WD challenges. This legendary 660km stock route was originally built for droving cattle from Wyndham to Derby. Today, it's an epic adventure exploring the Kimberley's magnificent gorges, authentic outback cattle stations, ancient Indigenous culture and captivating pioneering history.

If starting from Broome, take the Northern Highway to Derby (approximately 220km) before commencing the Gibb River Road.

START
Derby (or Broome)

END
Derby (or Broome)

BEST TIME
May to October

DURATION
10 to 14 days

VEHICLE
4WD

HIGHLIGHTS

- Windjana Gorge National Park
- Bell Gorge
- Manning Gorge
- Drysdale River Station
- Home Valley Station
- El Questro Wilderness Park
- Indigenous tours
- Aboriginal rock art

LEG 1 | Derby to Windjana National Park 152km

- Windjana Gorge National Park is one of the Kimberley's most stunning gorges. Follow the 3.5 km walk trail to explore this ancient reef system formed around 350 million years ago.
- Tunnel Creek National Park is WA's oldest cave system. Take a torch-lit walk through the 750-metre tunnel and its subterranean world of bats and fresh water crocodiles.

LEG 2 | Windjana National Park to Bell Gorge / Mount Hart Homestead 133km

- Bell Gorge is considered to be one of the Kimberley's most spectacular attractions, with a cascading 100-metre waterfall, inviting swimming pools and breathtaking cliff-top views.
- From Mount Hart Homestead, explore the remote ranges of King Leopold Range Conservation Park on foot or in a canoe.

LEG 3 | Bell Gorge to Manning Gorge 86km

- Stop at Galvans Gorge for a bushwalk to spectacular granite outcrops and lily-filled waterways.
- Explore the walk trails and ancient Indigenous rock art sites of Manning Gorge, take a swim beneath the falls, or book a guided walk to Upper Manning Gorge.

LEG 4 | Manning Gorge to Drysdale River Station 168km

- Take a scenic flight over Mitchell Falls and get an eagle's eye view of the coastal canyons of the Prince Regent River.

LEG 5 | Drysdale River Station to Home Valley Station 136km

- Ride out with the stockmen and experience an authentic cattle muster at Home Valley Station.

LEG 6 | Home Valley Station to El Questro Wilderness Park 141km

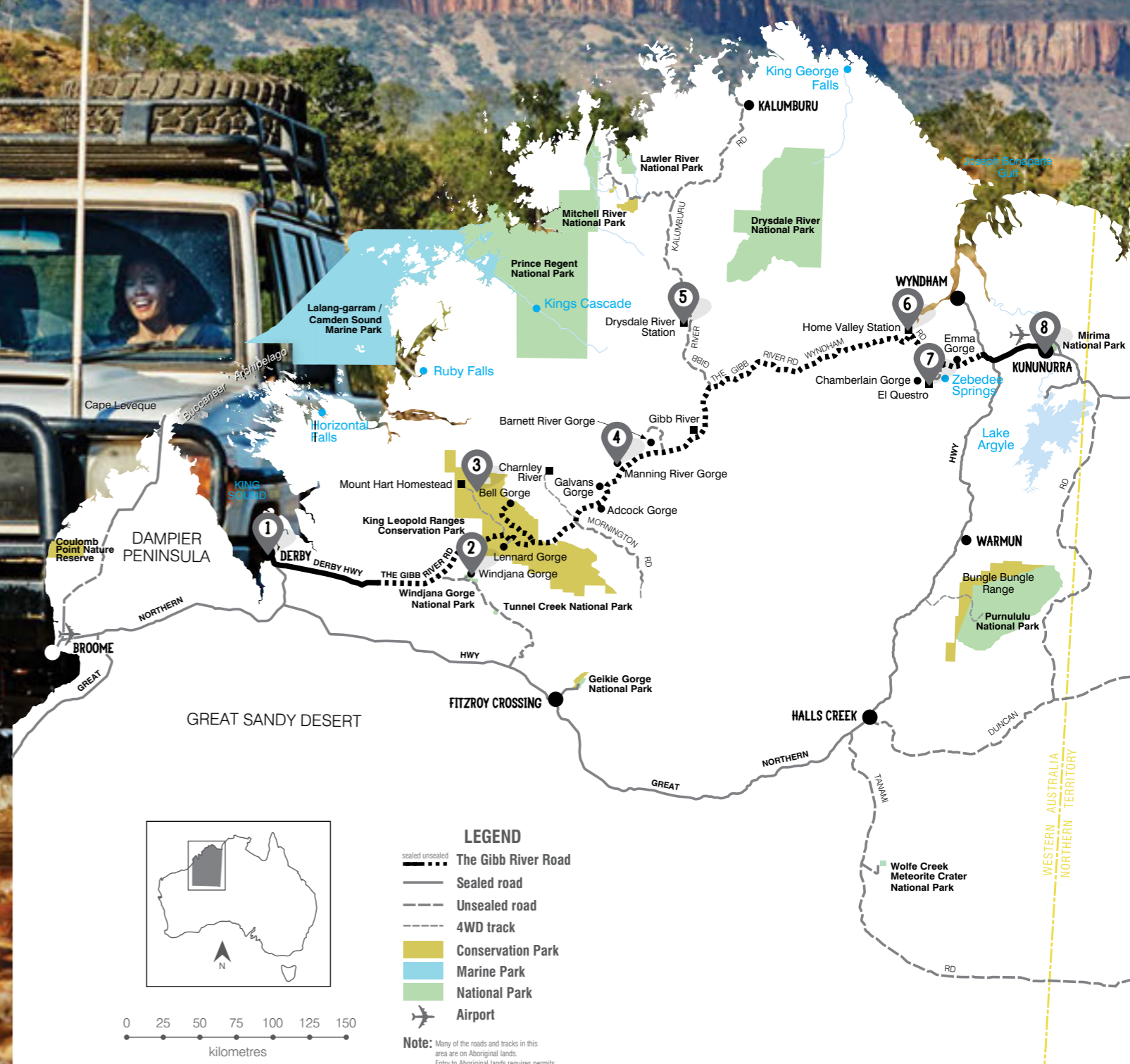
- Take a relaxing soak in the thermal pools at Zebedee Springs and a sunset cruise to Chamberlain Gorge.
- Discover the region's ancient Windjana Aboriginal rock art.

LEG 7 | El Questro Wilderness Park to Kununurra 95km

- Cruise the big waters of Lake Argyle near Kununurra – the largest man-made lake in the southern hemisphere.
- Take a thrilling helicopter flight over the Bungle Bungle Range of World Heritage listed Purnululu National Park.

LEG 8 | Kununurra to Derby (or Broome) 920km

- Retrace your tracks or take a 4WD adventure along the Gibb River Road to complete the Great Kimberley Wilderness Loop (p42).



The GREAT KIMBERLEY INLAND Track

Mitchell Plateau and Kalumburu

Take a detour off the legendary Gibb River Road four wheel drive (4WD) track for a wilderness camping and fishing adventure few have experienced. Here, you can hike and fly by helicopter to Mitchell Falls – one of Australia’s most scenic landmarks – camp under the starriest skies and fish the richest waters. A 4WD is essential, and some unsealed roads may be inaccessible during the wet season (September to May). Drivers are advised to contact a visitor centre to check road conditions before making the journey.

START
Gibb River Road

END
Gibb River Road

DURATION
4 to 6 days

HIGHLIGHTS

- Gibb River Road
- Mitchell Falls
- Kalumburu fishing

BEST TIME
May to October

VEHICLE
4WD

LEG 1 Gibb River Road/
Kalumburu Road Junction
to Drysdale River Station
59km

- Take a scenic flight over Mitchell Falls and get an eagle’s eye view of the coastal canyons of the Prince Regent River.
- Explore vast, ancient Livistonia forests and savannah woodlands on foot, and encounter the region’s abundant flora and rare fauna.

LEG 2 Drysdale River Station
to Mitchell Falls 188km

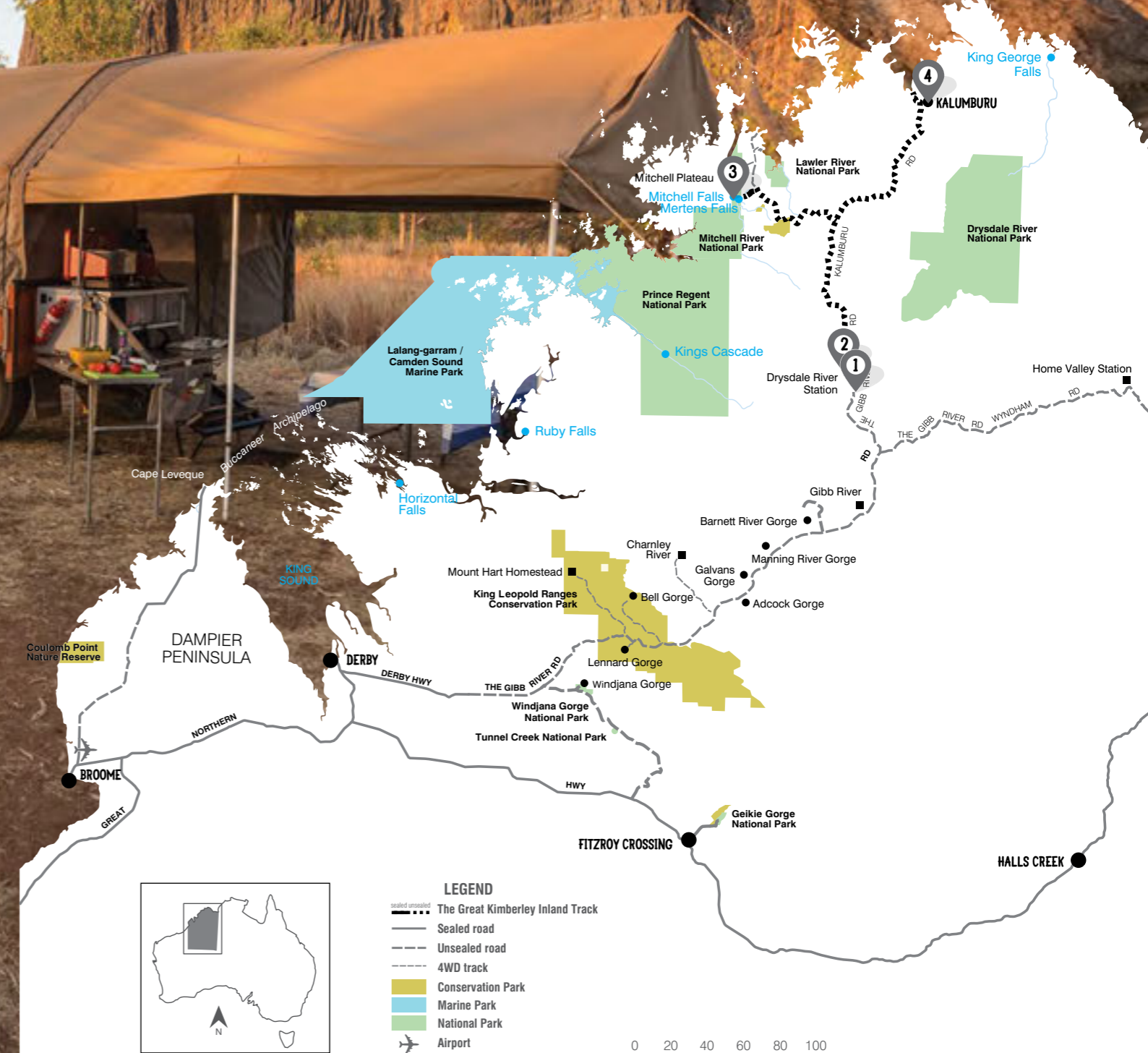
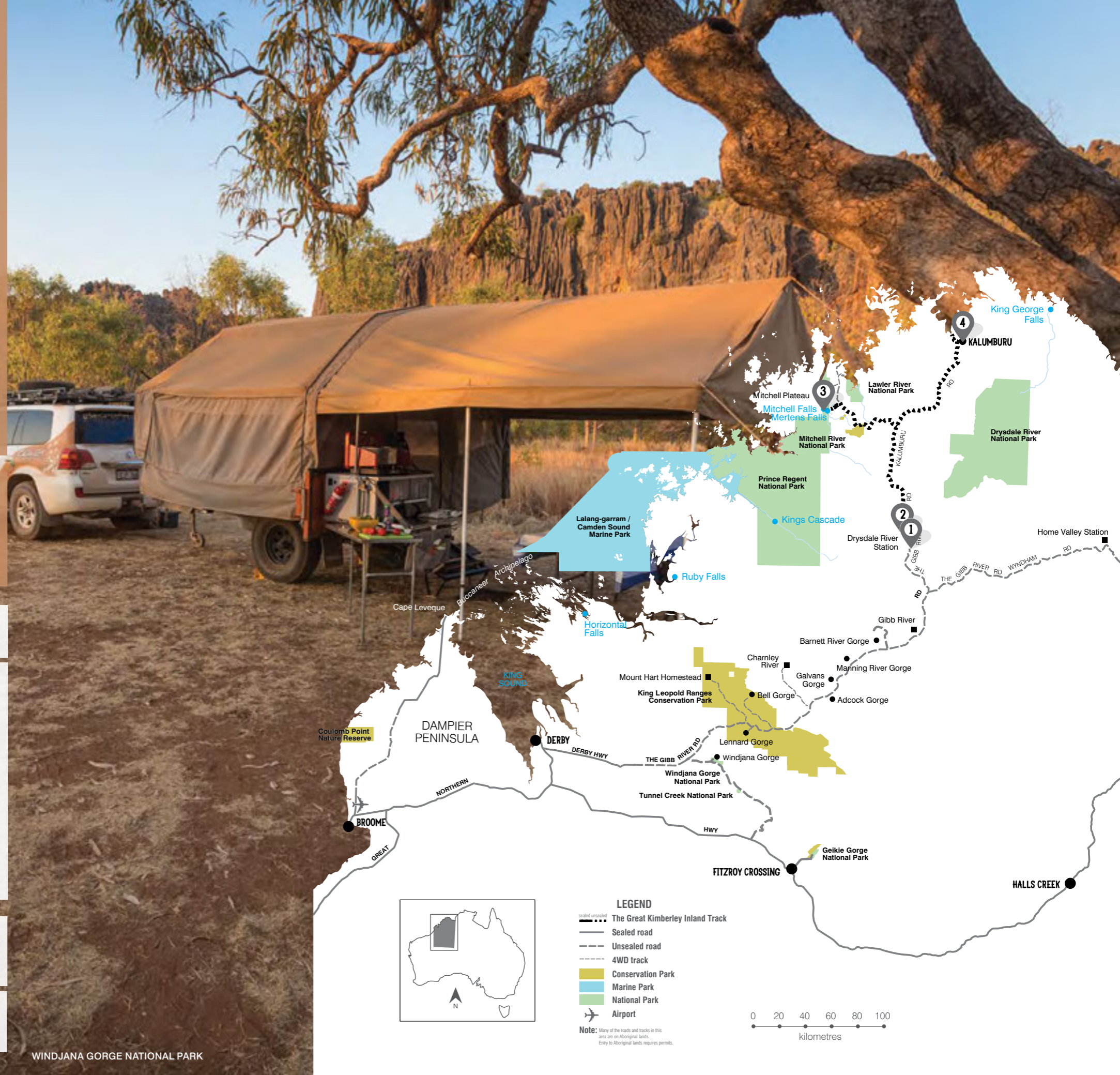
- Take the 6km wilderness walk to Mitchell Falls, and extend your adventure to Little Mertens Falls, Big Mertens Falls and Surveyors Pool.

LEG 3 Mitchell Falls to
Kalumburu Community
190km

- Kalumburu Mission is the State’s most remote and isolated Aboriginal community, surrounded by a wilderness landscape that’s been 1,800 million years in the making.
- Discover the ancient culture of the Kwini, Gambra and Walmbi people. Their ancestors created the Gyorn Gyorn rock art (Bradshaw paintings) – believed to be the oldest figurative paintings on Earth.

LEG 4 Kalumburu Community
to Gibb River Road/
Kalumburu Road
Junction 437km

- Return to the Gibb River Road to explore other iconic landscapes of east or west Kimberley wilderness.



The WARLU Way

Ningaloo Reef and Karijini National Park

This 12 day rugged road trip reveals the mystical Warlu 'sea serpent' and other aboriginal legends through Western Australia's Gascoyne, Pilbara and Kimberley regions. This drive takes in the natural wonders of Ningaloo Reef, the secluded Mackerel Islands, Karijini and Millstream Chichester national parks, and then along the coast to Broome.

START Exmouth
END Broome

DURATION
12 days

HIGHLIGHTS

- Ningaloo Reef
- Mackerel Islands
- Karijini National Park
- Millstream Chichester National Park
- Burrup Peninsula
- Broome

BEST TIME
May to October

VEHICLE
2WD and 4WD

LEG 1 | Exmouth to Onslow 401km

- Visit the world-heritage-listed Ningaloo Reef, where the reef starts a few steps from the shore, and swims can be had with gentle whale sharks (March to July), and humpback whales (July to October).
- Take a tour to the idyllic Mackerel Islands, 22km off the coast from the beachside town of Onslow.

LEG 2 | Onslow to Karijini National Park 481km

- Call in at Tom Price to panoramic views of the Hamersley Ranges, and walk to the top of Western Australia's second highest peak – Mt Nameless
- Head to see some of Mother Nature's finest work at Karijini National Park, where deep gorges lead to glistening palm fringed swimming holes.

LEG 3 | Karijini National Park to Millstream Chichester National Park 207km

- Journey from Karijini National Park to Millstream Chichester National Park. Stay at Miliyanha Campground and watch the sun set over Jirndwurrunha Pool.

LEG 4 | Millstream Chichester National Park to Karratha 134km

- Stay at Karratha and visit the Burrup Peninsula. See ancient petroglyphs, and take a tour through the Dampier Archipelago.

LEG 5 | Karratha to Port Hedland 240km

- Make the journey to Port Hedland, travelling through the historic coastal towns of Roebourne, Cossack and Point Samson, famed for its fresh seafood.

LEG 6 | Port Hedland to Eighty Mile Beach 254km

- Head for Eighty Mile Beach, stopping to take a look at the beautiful Cape Keraudren along the way. Look out for flatback turtles nesting from October to February.

LEG 7 | Eighty Mile Beach to Broome 376km

- Follow the coast to Broome and into the far north of Western Australia. Treat yourself to comfort, spa resorts and sunset drinks at Cable Beach.
- Take a cultural journey to the heart of Bardi country in the Dampier Peninsula and a pristine environment of blue ocean, white sands and red rocks.



LEGEND

- Sealed road
- - - Optional side trip
- - - Unsealed road
- Conservation Park
- Marine Park
- National Park
- ✈ Airport

Note: Many of the roads and tracks in this area are on Aboriginal lands. Entry to Aboriginal lands requires permits.



0 25 50 75 100
kilometres

The GREAT KIMBERLEY WILDERNESS Loop

Purnululu National Park, El Questro Wilderness Park and Windjana Gorge National Park

This 13-16 day adventure explores the Kimberley highlights you have always wanted to experience. From Geikie Gorge, to the Bungle Bungle Range, a journey along the iconic Gibb River Road and the magnificent El Questro Wilderness Park – it's a journey not to be missed.

START | Broome | **END** | Broome

BEST TIME
May to October

DURATION
13-16 days

VEHICLE
2WD and 4WD

HIGHLIGHTS

- Broome
- Purnululu National Park
- Kununurra
- El Questro Wilderness Park
- Windjana Gorge National Park

LEG 1 | Broome to Fitzroy Crossing 396km

- At the edge of a 350 million year old reef, beside the banks of the Fitzroy River and surrounded by some of Australia's biggest and best pastoral properties, you will find Fitzroy Crossing. It's the perfect place to learn and experience the rich culture of the Bunuba, Gooniyandi, Walmajarri, Nyikina and Wangkatjunka people.

LEG 2 | Fitzroy Crossing to Mimbi Caves and Halls Creek via Geikie Gorge 329km

- Enjoy a morning cruise through the majestic Geikie Gorge. Learn of the fascinating geology of this natural wonder and discover the huge array of wildlife including freshwater crocodiles, birds and fish.
- Venture into the enchanting Mimbi Caves, part of the 350 million year old Devonian reef system with a local Indigenous guide.

LEG 3 | Halls Creek to Wolfe Creek Crater 302km (return)

- Take a scenic flight or drive to Wolfe Creek Meteorite Crater National Park. Measuring 880 metres across, it's the second largest meteorite crater in the world.

LEG 4 | Halls Creek to Purnululu 212km

- See the curious beehive formations of the Bungle Bungle Range in World Heritage listed Purnululu National Park.

LEG 5 | Purnululu to Kununurra 252km (360km from Halls Creek)

- Travel onto the shores of the expansive Lake Argyle, the heart of the Ord River Irrigation System which has transformed this dry region into a lush agricultural oasis.
- Take a cruise of Lake Argyle – the largest man-made lake in the southern hemisphere and enjoy the region's abundant wildlife.

LEG 6 | Kununurra to El Questro Wilderness Park 95km

- Start on one of Australia's most unique 4WD challenge, the Gibb River Road.
- Journey to the iconic El Questro Wilderness Park and take a refreshing dip in the Zebedee Springs and a cruise to Chamberlain Gorge.

LEG 7 | El Questro Wilderness Park to Home Valley Station 141km

- Ride out with the stockmen and experience an authentic cattle muster at Home Valley Station.

LEG 8 | Home Valley Station to Drysdale River Station 136km

- Take a scenic flight over Mitchell Falls and get an eagle eye's view of the Prince Regent River.

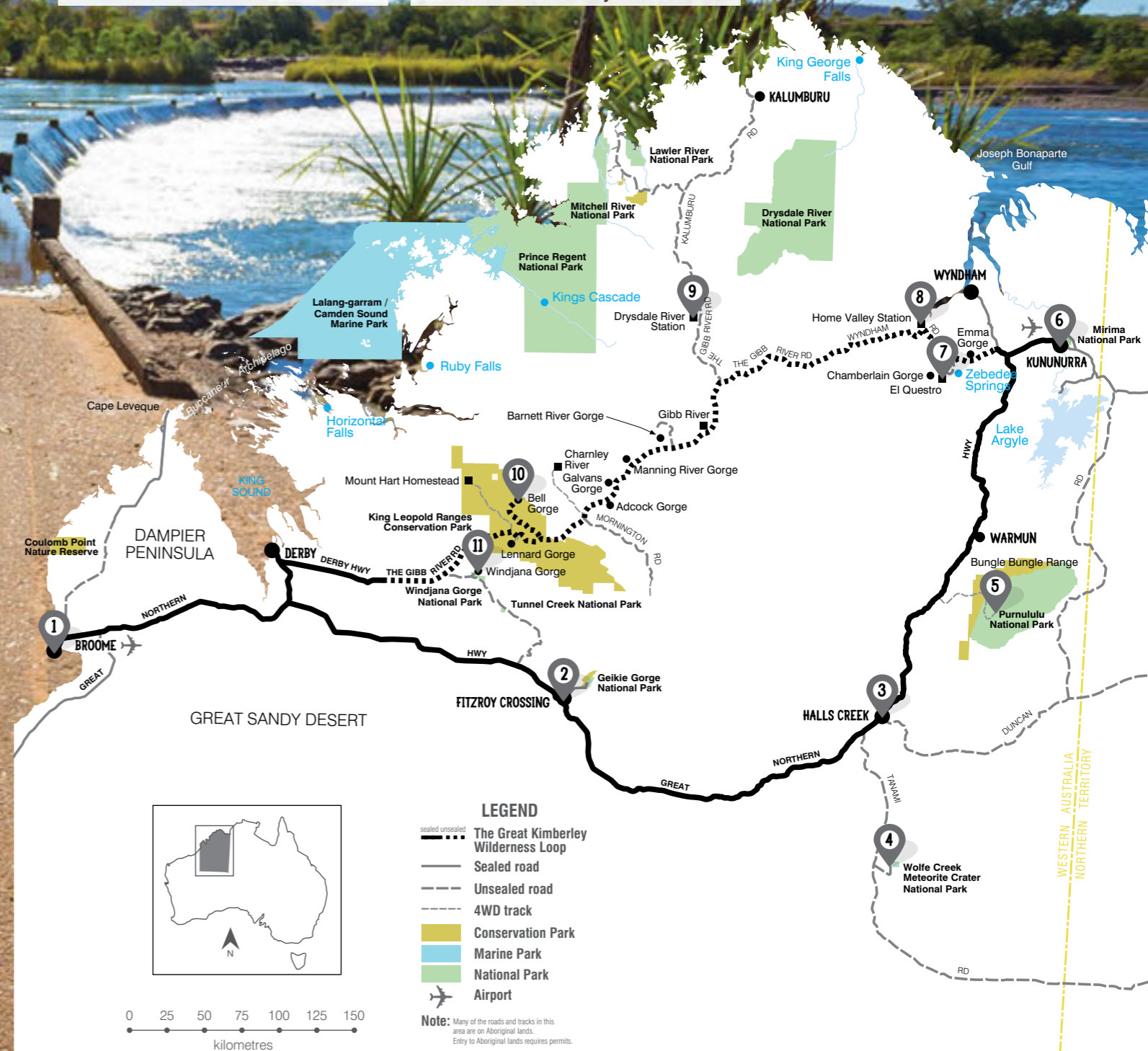
LEG 9 | Drysdale River Station to Manning Gorge to Bell Gorge 254km

- Explore the walk trails and ancient Indigenous rock art sites of Manning Gorge, take a swim beneath the falls or book a guided walk to Upper Manning Gorge.
- With a cascading 100 meter waterfall, Bell Gorge is considered as one of the Kimberley's most spectacular attractions.

LEG 10 | Bell Gorge to Windjana National Park 133km

- Windjana Gorge National Park is one of the Kimberley's most stunning gorges. The 3.5km walk trail allows you to explore the ancient reef system which formed around 350 million years ago.

LEG 11 | Windjana National Park to Broome via Derby 374km



Local TRAVEL tips: 5 KIMBERLEY TREASURES a short TRIP from BROOME



by Lorna Hendry

With hidden gems just a day's drive away, the Dampier Peninsula is a great way to explore the Kimberley.

Lorna Hendry and her family hired a 4WD in Broome and started down the Broome–Cape Leveque Road (the first 100km is unsealed but the rest is regularly maintained) to see five incredible sites.

JAMES PRICE POINT – A LOCAL HIDEAWAY

50km north of Broome, James Price Point is a favourite for Broome locals

and visitors alike looking for a day out or a short camping trip. The first thing we noticed on arrival was the red cliffs looming over white sand set off by the turquoise Indian Ocean.

BEAGLE BAY – IMMORTALISED IN FILM

Halfway up the Broome–Cape Leveque Road, right where the sealed road begins, is the community of Beagle Bay. It's most famous for its pearl encrusted altar which featured in the movie *Bran Nue Dae*.

LOMBADINA – ABORIGINAL TOURISM AT ITS BEST

200km north of Broome, Lombadina is 'the jewel in Kimberley's crown'. The Aboriginal Bardi people welcome visitors and a local-led tour is an incredible way to learn about their culture. We went on both mud crabbing and kayaking tours, which took us to a nearby reef where we pried oysters from rocks to eat on the spot.

CYGNET BAY – A PROUD PEARLING HISTORY

15km north of Lombadina, Cygnet Bay is Australia's oldest operating pearl farm. The pristine Kimberley waters and tides create the perfect conditions for the world-famous South Sea pearls. Take the one-hour farm tour and admire locally designed jewellery in the showroom.

CAPE LEVEQUE – THE PINNACLE

Right at the top of the Peninsula, Cape Leveque has the most stunning

coastline you'll ever see. Proudly owned by local Aboriginal communities, Kooljaman resort offers cultural tours and a cafe and restaurant where you can grab something while relaxing on the sand by red pindan cliffs. When we visited, we were lucky enough to spot a humpback whale from the beach. The clear water is very inviting and if, like us, you don't have your own snorkelling gear, you can hire it from the cafe.

There's no need to rush back to Broome: Lombadina, Cygnet Bay, and Kooljaman and a host of others all offer accommodation.

Six DAY TRIPS from PERTH

Throughout Perth, you'll find rooftop bars, fashionable fine dining restaurants and hidden laneways coloured with street art that lead to basement bars and hip cafes. The rise of the 60,000 seat Optus Stadium, the glistening Elizabeth Quay and several new public spaces such as Yagan Square, have transformed the city. Add the expansive Kings Park, a coast of Indian Ocean beaches and the idyllic Rottnest Island, Perth is now seen as one of the world's prettiest and most liveable cities.

1. ROCKINGHAM

Heading 40 minutes south of Perth takes you to the pristine islands and reefs of the Shoalwater Islands Marine Park. Discover an incredible array of marine encounters, from penguins and dolphins to dive wrecks and snorkel trails. With pods of dolphins regularly visiting these coastal waters, it's a great opportunity to swim with wild dolphins. If you'd prefer to stay dry, you can watch these playful creatures from a boat tour as they ride the bow beneath your feet.

2. ROTTNEST ISLAND

Perth's idyllic island playground, Rottnest is just a short ferry ride from the mainland and a world away from city life. For such a tiny island, this car-free and carefree Class A reserve packs a lot of pleasure into a day. On its shores, 63 stunning beaches, 20 beautiful bays and many coral reefs and wrecks invite you to enjoy some of Australia's finest swimming spots, snorkel trails and surf breaks. And on dry land, you'll meet the cutest mini marsupial, found only in Western Australia, the world famous quokka.

3. MANDURAH

For those who love being on, in or near the water, Mandurah is a dream destination just 55 minutes south of Perth. There, you'll find some of Australia's most spectacular waterways, including the Peel-Harvey estuary, which is twice the size of Sydney Harbour and blessed with abundant wildlife, pristine beaches, beautiful blue-green waters and a buzzing foreshore area.

4. FREMANTLE

Against a backdrop of the best preserved 19th century port streetscape in the world, a day out in Fremantle is an eclectic and eccentric blend of fabulous artisanal food, handcrafted beers, great coffee, quirky boutiques and a lively music, arts and festival scene. Duck into the Little Creatures brewery, or explore one of the hidden pockets of restaurants and bars in the west end. Another fun way to get to Fremantle is to take a Captain Cook Cruise from the city along the Swan River to the 'Freo' port. There's a good chance of spotting a dolphin along the way.

5. THE PINNACLES

Take a day trip from Perth to the other-worldly landscape of the Pinnacles Desert in Nambung National Park. Following the Indian Ocean Drive, you can stop to meet friendly kangaroos, try sandboarding and taste Cervantes' famous seafood delicacy – The western Rock Lobster. If you're travelling between July and October, you'll see Western Australia in full colour, as the coastal landscapes are filled with the blooms of spring wildflowers.

6. SWAN VALLEY & PERTH HILLS

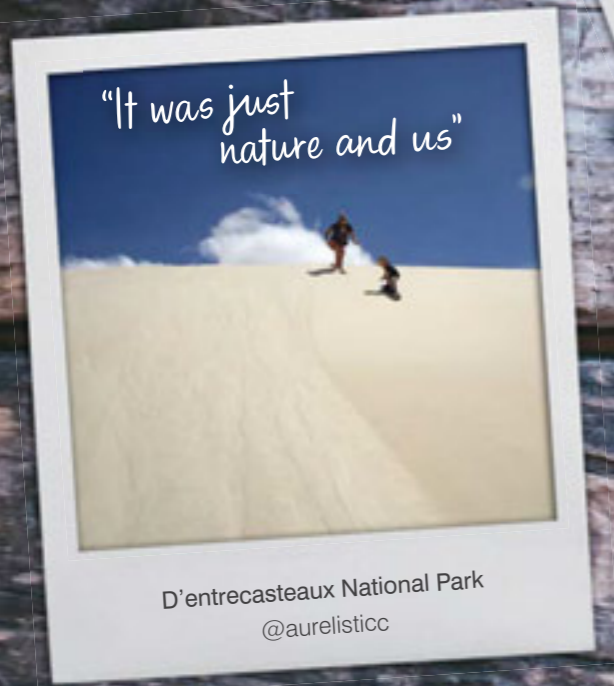
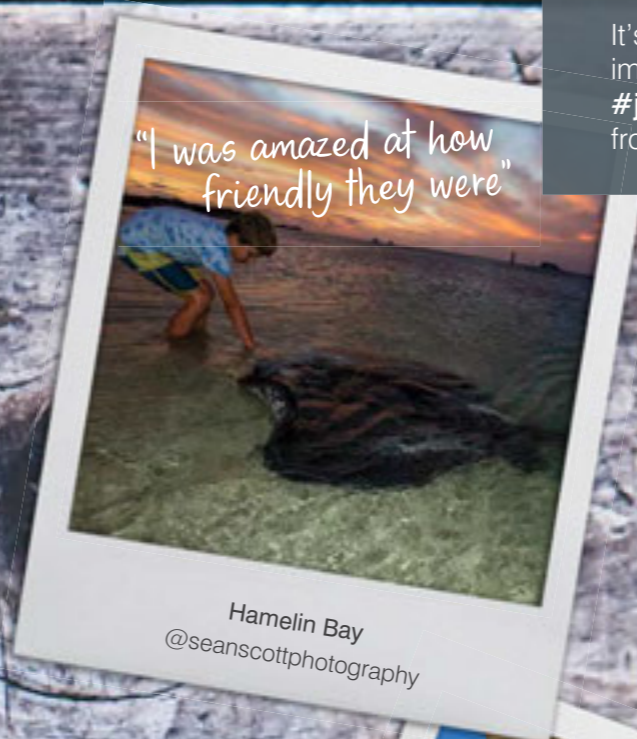
Take a 25-minute drive from the city and you'll find yourself surrounded by some of Western Australia's oldest vineyards, and award winning wineries and microbreweries. Many of the wineries offer al fresco dining, or you can opt to fill a basket with gourmet goodies and head for a picnic. In and around Guildford or beside Bells Rapids are popular spots.

Extend your drive from the Swan Valley to the Perth Hills, takes in the towns of Kalamunda and Armadale, gateways to the Araluen Botanical Park, wineries of the Bikley Valley and the Bibbulmun Track walk.



SNAPS from the ROAD

It's not the photo, but the memory or inspiration that an image triggers that makes it special. Inspire others and tag [#justanotherdayinWA](#) to share your favourite road trip moments from across Western Australia.



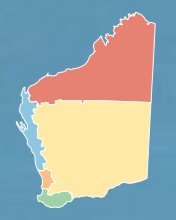
FIND your WAY

	Less than a week	More than a week	More than a couple of weeks
Broome and The Kimberley	The Great Kimberley Inland Track (pg 38-39) The Ardi Cultural Drive (pg 34-35) The West Kimberley Crossing (pg 32-33)	The Great Kimberley Inland Track (pg 38-39) The West Kimberley Crossing (pg 32-33)	The Gibb River Road (pg 36-37) The Warlu Way (pg 40-41) The Great Kimberley Wilderness Loop (pg 42-43)
Exmouth and Coral Coast		The Indian Ocean Drive (pg 22-23) The Wool Wagon Pathway (pg 24-25)	The World Heritage Coastal Drive (pg 26-27)
Esperance and the Golden Outback	The Avon Valley 500 Loop (pg 6-7) The Great Ocean Drive (pg 18-19)	The Golden Quest Discovery Trail (pg 20-21)	
Margaret River and the South West	The Great Southern Drive (pg 8-9) The South West Nature and Wine Drive (pg 10-11)		The Great South West Edge (pg 12-13)
Perth	Rockingham Rottneest Swan Valley Fremantle (pg 46-47)		

One way vehicle rentals available between Perth and Exmouth in either direction. For further details head to: westernaustralia.com/oneway

Road trips starting/ending in Perth

NATURE'S CALENDAR

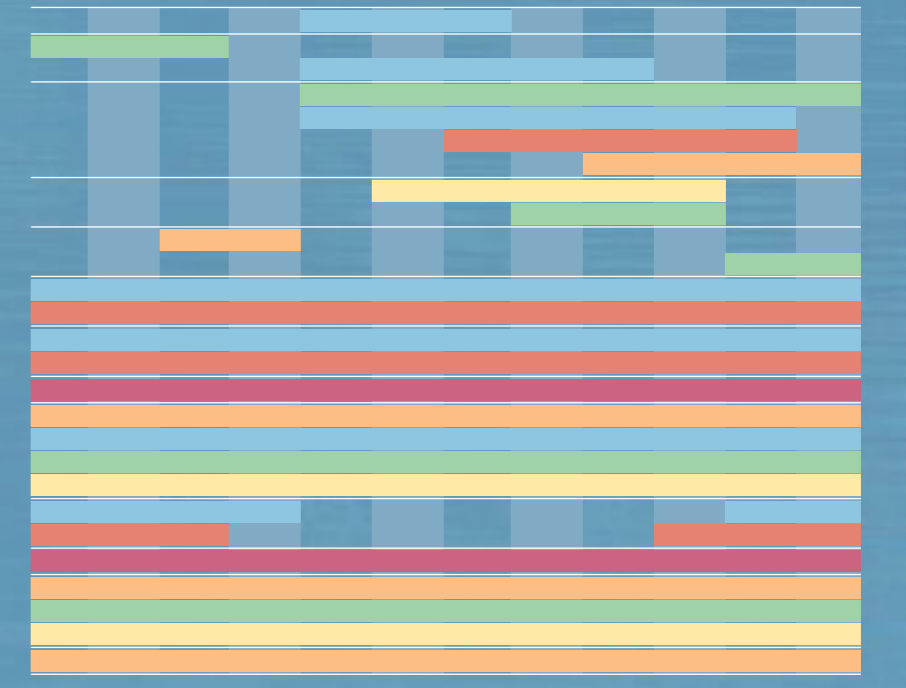


- The Coral Coast
- The Golden Outback
- Perth
- The North West
- The South West
- Statewide

WILDLIFE HIGHLIGHTS

- Whale shark
- Orca (killer whale)
- Humpback whale (Coral Coast swims from July to October)
- Southern right whale
- Blue whale
- Manta ray
- Dugong
- Dolphin
- Seals and sea lions
- Sea turtle nesting / hatchlings
- Emu
- Little penguins
- Quokkas

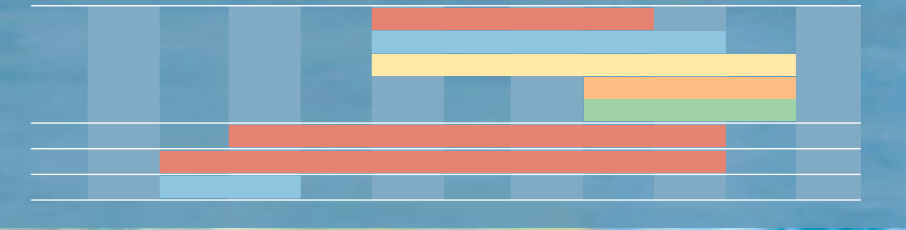
JAN FEB MAR APR MAY JUN JUL AUG SEP OCT NOV DEC



NATURAL PHENOMENA

- Wildflowers
- Horizontal Falls (boat trip)
- Staircase to the moon
- Coral spawning

JAN FEB MAR APR MAY JUN JUL AUG SEP OCT NOV DEC



DRIVING IN WESTERN AUSTRALIA

Driving around Western Australia is one of the best ways to see the state. If you're not familiar with the local rules of the road, here are some hints, tips and rules to keep you safe.

Driving on the left

In Australia, all vehicles drive on the left of the road.

Merging

When merging as two lanes form one, the vehicle in front has right of way.

Roundabouts

When entering a roundabout, always give way to any vehicle already in the roundabout.

Crossing road lines

You may cross a broken line if it is safe to do so, but continuous unbroken lines should not be crossed unless you need to avoid an obstruction.

Sharing the road with cyclists

Give way to cyclists, and when overtaking allow a distance of 1.5m between your vehicle and the cyclist.

Making a "U-turn"

When making a U-Turn give way to all other road users, and use the indicator to signal your maneuver.

Mobile phone distraction

It is illegal to use your mobile phone while driving, enjoy the view instead.

Drink driving

Driving in Western Australia with a blood alcohol level over .05 is illegal.

Buckle up

Wearing seatbelts is mandatory in Western Australia, and drivers and passengers can be fined for not wearing them.

Your driving licence

Holders of an overseas driving licence must carry a copy of their licence with a translation, or an International Drivers' Permit while driving.

Driving on gravel roads

- Slow down on bends
- Don't brake suddenly
- Be prepared for dust and stones from passing vehicles

Wildlife on the road

Be aware of roaming animals such as kangaroos, cattle, camels and even eagles on the road in some country areas. Especially at sunrise and sunset.

Low visibility

Avoid driving in hazardous weather, and putting your headlights on is a great way to be seen at day or night.

DRIVING TO WESTERN AUSTRALIA

2WD - Take the epic Eyre Highway from Port Augusta in South Australia, across the vast Nullarbor Plain to Norseman, playing a few holes on the world's longest golf course – the Nullarbor Links – along the way.

If you're driving to Western Australia from Darwin, the Victoria Highway connecting to the Great Northern Highway takes you through the spectacular Kimberley to Broome.

4WD - For a 4WD adventure across World Heritage listed tropical savannahs, take the *Savannah Way* from Cairns in North Queensland to WA's exotic pearling town of Broome.

Or journey through Australia's red centre along *The Outback Way*. This 4WD odyssey spans 2,700 kilometres from Winton in Queensland, to Uluru and ending at Laverton in WA's Goldfields region.

Add to the adventure by hitting the legendary Gibb River Road through the Kimberley wilderness.

TALK TO THE EXPERTS

The Western Australian Visitor Centre is located in the centre of Perth. It is a one-stop shop for travel information, souvenirs, and offers a free tours and accommodation booking service.

Open daily

Location: 55 William Street, (corner of Hay Street) Perth, Western Australia, 6000

Telephone: 1800 812 808

Email: travel@westernaustralia.com

Website: wavisitorcentre.com.au

WHERE ELSE YOU CAN FIND US

f Facebook: facebook.com/extraordinarywesternaustralia
[@ExtraordinaryWesternAustralia](https://twitter.com/ExtraordinaryWesternAustralia)

Instagram: [Instagram.com/westernaustralia](https://instagram.com/westernaustralia)
[@WesternAustralia](https://twitter.com/WesternAustralia)

Hashtags: [#justanotherdayinwa](https://twitter.com/justanotherdayinwa)
[#westernaustralia](https://twitter.com/westernaustralia)

YouTube: youtube.com/westernaustralia
[@WesternAustralia](https://twitter.com/WesternAustralia)

Twitter: twitter.com/westaustralia
[@WestAustralia](https://twitter.com/WestAustralia)

Website: westernaustralia.com
justanotherdayinwa.com
australiassouthwest.com
experienceperth.com
australiascoralcoast.com
australiasgoldenoutback.com
australiasnorthwest.com